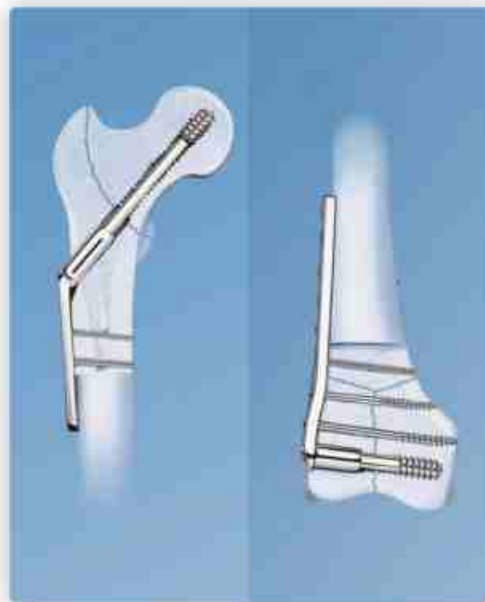


OSVEH Asia

DHS/DCS Plates



OSVEH Asia

DHS (Dynamic Hip System)

Including all combinations of DHS Screw, DHS plate with DCP holes, LCP DHS plate and compression screw.

Indication:

The DHS is indicated for the following fractures of the proximal femur:

- Intertrochanteric fractures
- Subtrochanteric fractures*
- Basilar neck fractures

The DHS is indicated for stable fractures, and unstable fractures in which a stable medial buttress can be reconstructed. The DHS provides controlled collapse and compression of fracture fragments. This results in stable fixation and prevents undue stress concentration on the implant.

* For certain subtrochanteric fracture, a 95° device (such as DCS) is the implant of choice.



Contraindications:

The DHS is not to be used in cases where there is a high incidence of:

- Sepsis
- Malignant primary or metastatic tumors
- Material sensitivity
- Compromised vascularity

Recommendations DHS

- LCP DHS: for the use of shorter plates, especially in the case of femoral neck fractures
- For certain subtrochanteric fractures, a 95° DCS plate is recommended.

Trochanter Stabilizing Plate (TSP)

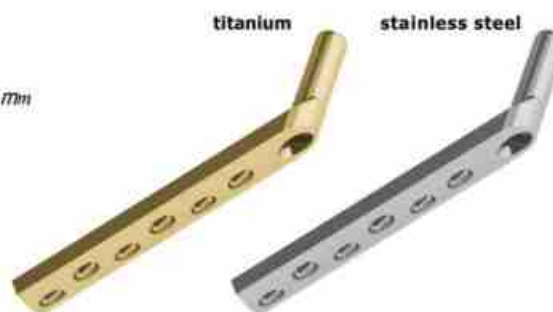
- Unstable Pertrochanteric fractures especially multifragmentary fractures with a separated or longitudinally split greater trochanter

OSVEH Asia

DHS Plate 135°, Barrel Length 38 mm

Specification:

Thickness 5.8 mm
 Width 19.0 mm
 Hole spacing 16.0 mm
 Outer barrel diameter 12.5 mm



Sizes:

| Product No. | | Holes | Length mm |
|-----------------|----------|-------|-----------|
| Stainless Steel | Titanium | | |
| 231.046 | 531.046 | 2 | 46 |
| 231.062 | 531.062 | 3 | 62 |
| 231.078 | 531.078 | 4 | 78 |
| 231.094 | 531.094 | 5 | 94 |
| 231.110 | 531.110 | 6 | 110 |
| 231.126 | 531.126 | 7 | 126 |
| 231.142 | 531.142 | 8 | 142 |
| 231.158 | 531.158 | 9 | 158 |

| Product No. | | Holes | Length mm |
|-----------------|----------|-------|-----------|
| Stainless Steel | Titanium | | |
| 231.174 | 531.174 | 10 | 174 |
| 231.190 | 531.190 | 11 | 190 |
| 231.206 | 531.206 | 12 | 206 |
| 231.222 | 531.222 | 13 | 222 |
| 231.238 | 531.238 | 14 | 238 |
| 231.254 | 531.254 | 15 | 254 |
| 231.270 | 531.270 | 16 | 270 |
| 231.286 | 531.286 | 17 | 286 |
| 231.302 | 531.302 | 18 | 302 |

Note:

Fixation with the following Screws:
 4.5 mm Cortex Screws

LCP DHS Plate 135°, Barrel Length 38 mm

Specification:

*Thickness 5.8 mm
Width 19.0 mm
Hole spacing 16.0 mm
Outer barrel diameter 12.5 mm*



Sizes:

| Product No. | | Holes | Length mm |
|-----------------|----------|-------|-----------|
| Stainless Steel | Titanium | | |
| 227.052 | 527.052 | 2 | 52 |
| 227.068 | 527.068 | 3 | 68 |
| 227.084 | 527.084 | 4 | 84 |
| 227.100 | 527.100 | 5 | 100 |
| 227.116 | 527.116 | 6 | 116 |
| 227.132 | 527.132 | 7 | 132 |
| 227.148 | 527.148 | 8 | 148 |

| Product No. | | Holes | Length mm |
|-----------------|----------|-------|-----------|
| Stainless Steel | Titanium | | |
| 227.164 | 527.164 | 9 | 164 |
| 227.180 | 527.180 | 10 | 180 |
| 227.196 | 527.196 | 11 | 196 |
| 227.212 | 527.212 | 12 | 212 |
| 227.228 | 527.228 | 13 | 228 |
| 227.244 | 527.244 | 14 | 244 |
| 227.260 | 527.260 | 15 | 260 |
| 227.276 | 527.276 | 16 | 276 |

Note:

Fixation with the following Screws:
5.0 mm Locking Screws
4.5 mm Cortex Screws

OSVEH Asla

Conventional DHS Trochanter Stabilizing Plate (TSP), Stainless steel

Specification:

Thickness 2 mm

Width shaft 22.5 mm



Sizes:

| Product No. | Length mm | sizes |
|-------------|--------------|-------|
| 232.138 | 138 | short |
| 232.148 | 148 | Long |

DCS (Dynamic Condylar System)

Including all combinations of DCS Screw, DCS plate with DCP holes, LCP DCS plate and compression screw.

Indication:

The DCS is indicated for the following fracture of the distal femur:

- Intercondylar fractures*
- Supracondylar fractures*
- Unicondylar fractures*

* The following anatomic conditions should exist:

- 4 cm of distal femur should remain intact to provide support for the implant.
- A distal portion of the medial condyle should be intact for the DHS/DCS lag screw to gain good purchase.

If these conditions do not exist, LCP distal femur plate should be considered.



OSVEH Asia

The DCS is indicated for the following fractures of the proximal femur:

- Transverse subtrochanteric fractures**
- Short oblique subtrochanteric fractures**
- Long oblique subtrochanteric fractures**

** With the lesser trochanter avulsed or on the distal fragment (femoral shaft).

Contraindications DCS:

- Peritrochanteric fractures or trochanteric fractures with Subtrochanteric expansion

DCS Plate 95°, Barrel Length 25 mm

Specification:

*Thickness 5.4 mm
Width 16.0 mm
Hole spacing 16.0 mm
Outer barrel diameter 12.5 mm*



Sizes:

| Product No. | | Holes | Length mm |
|-----------------|----------|-------|-----------|
| Stainless Steel | Titanium | | |
| 236.084 | 536.084 | 4 | 82 |
| 236.098 | 536.098 | 5 | 98 |
| 236.114 | 536.114 | 6 | 114 |
| 236.130 | 536.130 | 7 | 130 |
| 236.146 | 536.146 | 8 | 146 |
| 236.162 | 536.162 | 9 | 162 |
| 236.178 | 536.178 | 10 | 178 |
| 236.194 | 536.194 | 11 | 194 |

| Product No. | | Holes | Length mm |
|-----------------|----------|-------|-----------|
| Stainless Steel | Titanium | | |
| 236.210 | 536.210 | 12 | 210 |
| 236.226 | 536.226 | 13 | 226 |
| 236.242 | 536.242 | 14 | 242 |
| 236.258 | 536.258 | 15 | 258 |
| 236.274 | 536.274 | 16 | 274 |
| 236.290 | 536.290 | 17 | 290 |
| 236.306 | 536.306 | 18 | 306 |
| 236.322 | 536.322 | 19 | 322 |
| 236.338 | 536.338 | 20 | 338 |

Note:

Fixation with the following Screws:
4.5 mm Cortex Screws

OSVEH Asia

LCP DCS Plate 95°, Barrel Length 25 mm

Specification:

Thickness 5.4 mm

Width 16.0 mm

Hole spacing 16.0 mm

Outer barrel diameter 12.5 mm



Sizes

| Product No. | | Holes | Length mm |
|-----------------|----------|-------|--------------|
| Stainless Steel | Titanium | | |
| 226.068 | 526.068 | 4 | 68 |
| 226.084 | 526.084 | 5 | 84 |
| 226.100 | 526.100 | 6 | 100 |
| 226.116 | 526.116 | 7 | 116 |
| 226.132 | 526.132 | 8 | 132 |
| 226.148 | 526.148 | 9 | 148 |
| 226.164 | 526.164 | 10 | 164 |
| 226.180 | 526.180 | 11 | 180 |
| 226.196 | 526.196 | 12 | 196 |

| Product No. | | Holes | Length mm |
|-----------------|----------|-------|--------------|
| Stainless Steel | Titanium | | |
| 226.212 | 526.212 | 13 | 212 |
| 226.228 | 526.228 | 14 | 228 |
| 226.244 | 526.244 | 15 | 244 |
| 226.260 | 526.260 | 16 | 260 |
| 226.276 | 526.276 | 17 | 276 |
| 226.292 | 526.292 | 18 | 292 |
| 226.308 | 526.308 | 19 | 308 |
| 226.324 | 526.324 | 20 | 324 |
| 226.340 | 526.340 | 21 | 340 |
| 226.356 | 526.356 | 22 | 356 |

Note:

Fixation with the following Screws:

5.0 mm Locking Screws

4.5 mm Cortex Screws



DHS/DSC Screw

Specification:

*Thread diameter 12.5 mm
Thread length 22.0 mm
Shaft diameter 8.0 mm
Thread pitch 3.0 mm*



Sizes:

| Product No. | | Total Length mm |
|-----------------|----------|--------------------|
| Stainless Steel | Titanium | |
| 124.050 | 424.050 | 50 |
| 124.055 | 424.055 | 55 |
| 124.060 | 424.060 | 60 |
| 124.065 | 424.065 | 65 |
| 124.070 | 424.070 | 70 |
| 124.075 | 424.075 | 75 |
| 124.080 | 424.080 | 80 |

| Product No. | | Total Length mm |
|-----------------|----------|--------------------|
| Stainless Steel | Titanium | |
| 124.085 | 424.085 | 85 |
| 124.090 | 424.090 | 90 |
| 124.095 | 424.095 | 95 |
| 124.100 | 424.100 | 100 |
| 124.105 | 424.105 | 105 |
| 124.110 | 424.110 | 110 |
| 124.115 | 424.115 | 115 |
| 124.120 | 424.120 | 120 |

OSVEH Asia

DHS/DSC Compression Screw

Specification:

Thread diameter 4.0 mm

Core diameter 3.14 mm

Head diameter 9 mm

Shaft diameter 3.5 mm

Hexagonal socket width 3.5 mm

Thread pitch 0.7 mm

titanium



stainless steel



Sizes:

| Product No. | | Total length mm |
|-----------------|----------|-----------------|
| Stainless Steel | Titanium | |
| 126.036 | 426.036 | 36 |